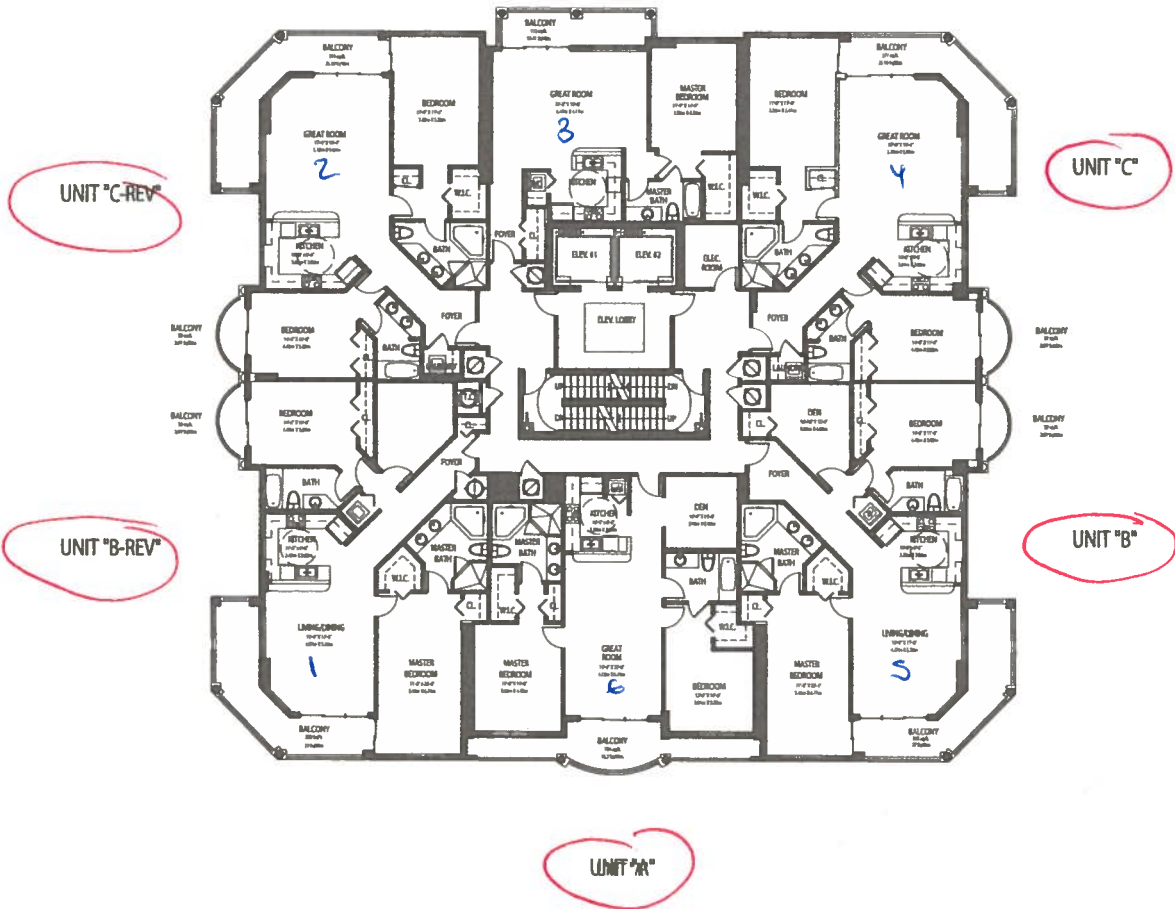


# VUE

RESIDENCES & BEACH CLUB

LEVEL 3-6

1211



Plans, materials and specifications are subject to architectural, structural and other revisions as they are deemed advisable by the developer, builder or architect, or as they may be required by law. Oral representations cannot be relied upon as correctly stating representations of the developer. For correct representations, reference should be made to the documents required by Section 718.503, Florida Statutes, to be furnished by a developer to a buyer or lessee. All renderings are artist's conception.

# VUE

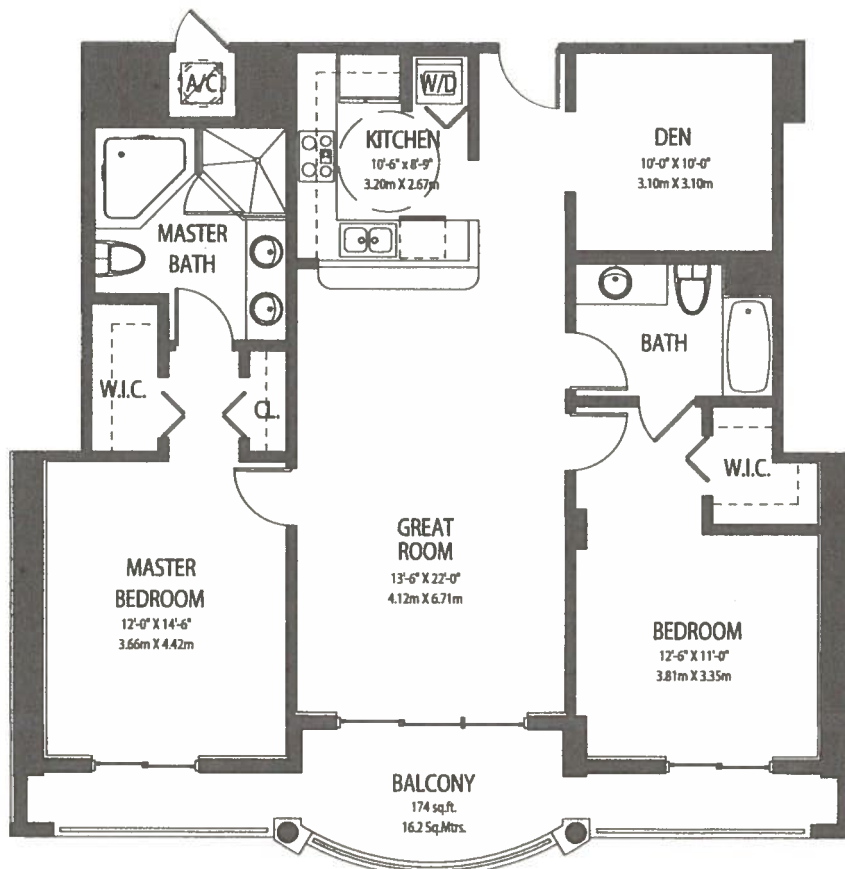
RESIDENCES & BEACH CLUB

## UNIT *A*

Area A/C 1,279 sq.ft. (119 m<sup>2</sup>)

Area Terrace 174 sq.ft. (16 m<sup>2</sup>)

Total Living Area 1,438 sq.ft. (135 m<sup>2</sup>)



Plans, materials and specifications are subject to architectural, structural and other revisions as they are deemed advisable by the developer, builder or architect, or as they may be required by law. Oral representations cannot be relied upon as correctly stating representations of the developer. For correct representations, reference should be made to the documents required by Section 718.503, Florida Statutes, to be furnished by a developer to a buyer or lessee. All renderings are artist's conception.

# VUE

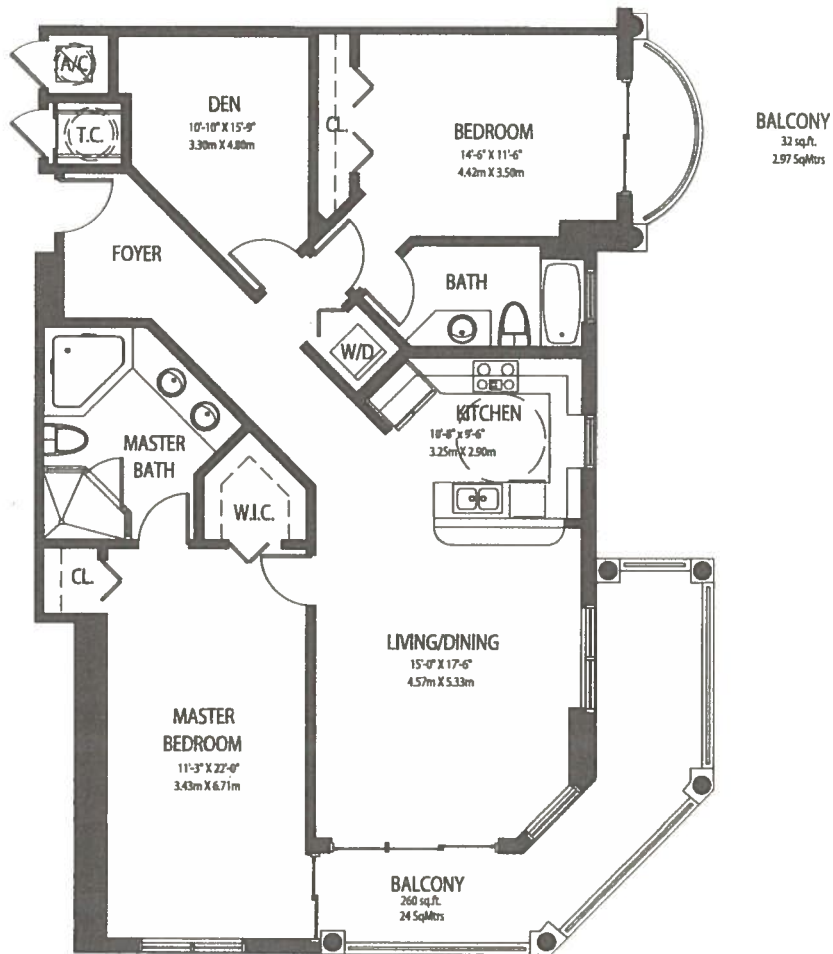
RESIDENCES & BEACH CLUB

UNIT *B*

Area A/C 1,481 sq.ft. (138 m<sup>2</sup>)

Area Terrace 292 sq.ft. (27 m<sup>2</sup>)

Total Living Area 1,773 sq.ft. (165 m<sup>2</sup>)



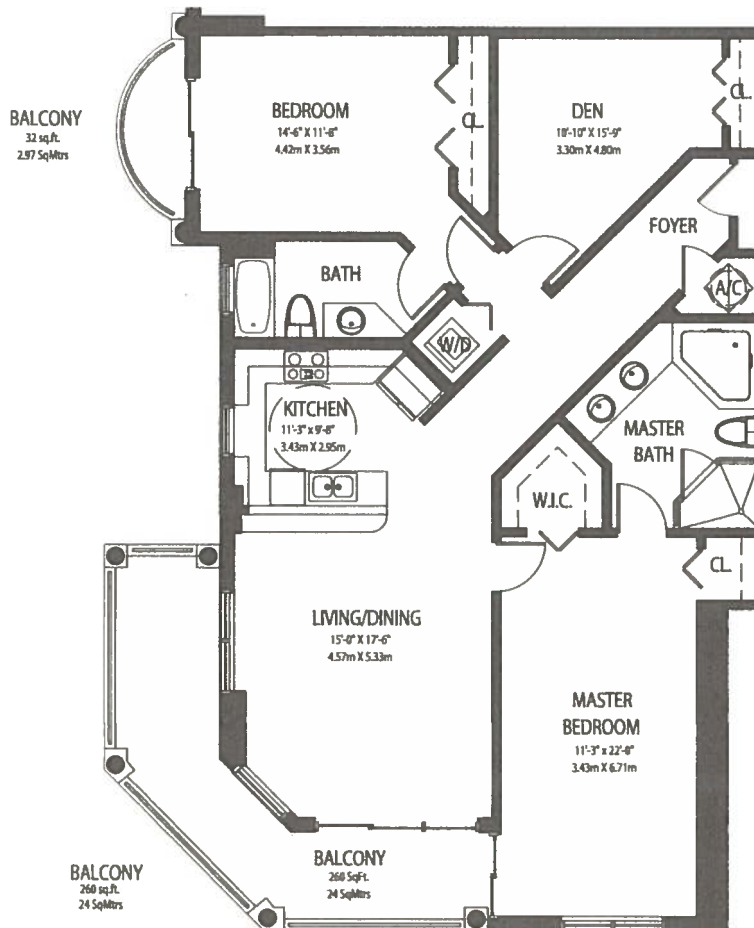
Plans, materials and specifications are subject to architectural, structural and other revisions as they are deemed advisable by the developer, builder or architect, or as they may be required by law. Oral representations cannot be relied upon as correctly stating representations of the developer. For correct representations, reference should be made to the documents required by Section 718.503, Florida Statutes, to be furnished by a developer to a buyer or lessee. All renderings are artist's conception.



RESIDENCES & BEACH CLUB

UNIT *8* REV

Area A/C	1,476 sq.ft.	(137m <sup>2</sup> )
Area Terrace	292 sq.ft.	(27 m <sup>2</sup> )
<hr/>		
Total Living Area	1,768 sq.ft.	(164 m <sup>2</sup> )



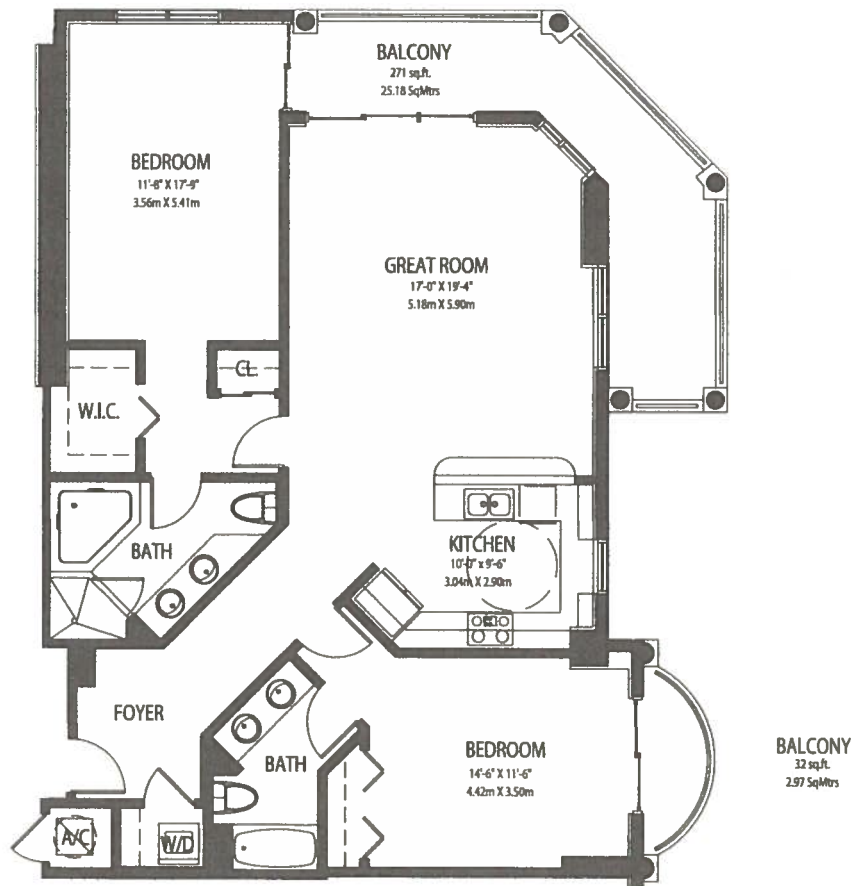
Plans, materials and specifications are subject to architectural, structural and other revisions as they are deemed advisable by the developer, builder or architect, or as they may be required by law. Oral representations cannot be relied upon as correctly stating representations of the developer. For correct representations, reference should be made to the documents required by Section 718.503, Florida Statutes, to be furnished by a developer to a buyer or lessee. All renderings are artist's conception.

# VUE

RESIDENCES & BEACH CLUB

## UNIT *C*

Area A/C	1,390 sq.ft.	(129 m <sup>2</sup> )
Area Terrace	303 sq.ft.	(28 m <sup>2</sup> )
<hr/>		
Total Living Area	1,693 sq.ft.	(157 m <sup>2</sup> )



Plans, materials and specifications are subject to architectural, structural and other revisions as they are deemed advisable by the developer, builder or architect, or as they may be required by law. Oral representations cannot be relied upon as correctly stating representations of the developer. For correct representations, reference should be made to the documents required by Section 718.503, Florida Statutes, to be furnished by a developer to a buyer or lessee. All renderings are artist's conception.

# VUE

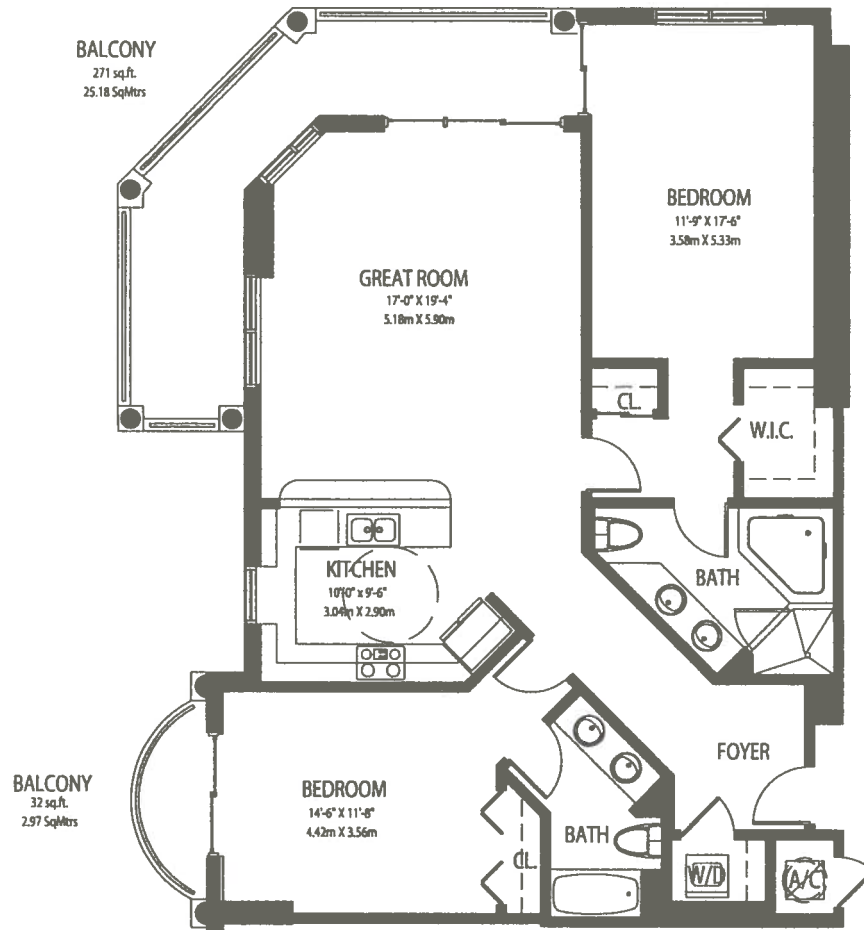
RESIDENCES & BEACH CLUB

## UNIT C REV.

Area A/C 1,390 sq.ft. (129 m<sup>2</sup>)

Area Terrace 303 sq.ft. (28 m<sup>2</sup>)

Total Living Area 1,693 sq.ft. (157 m<sup>2</sup>)



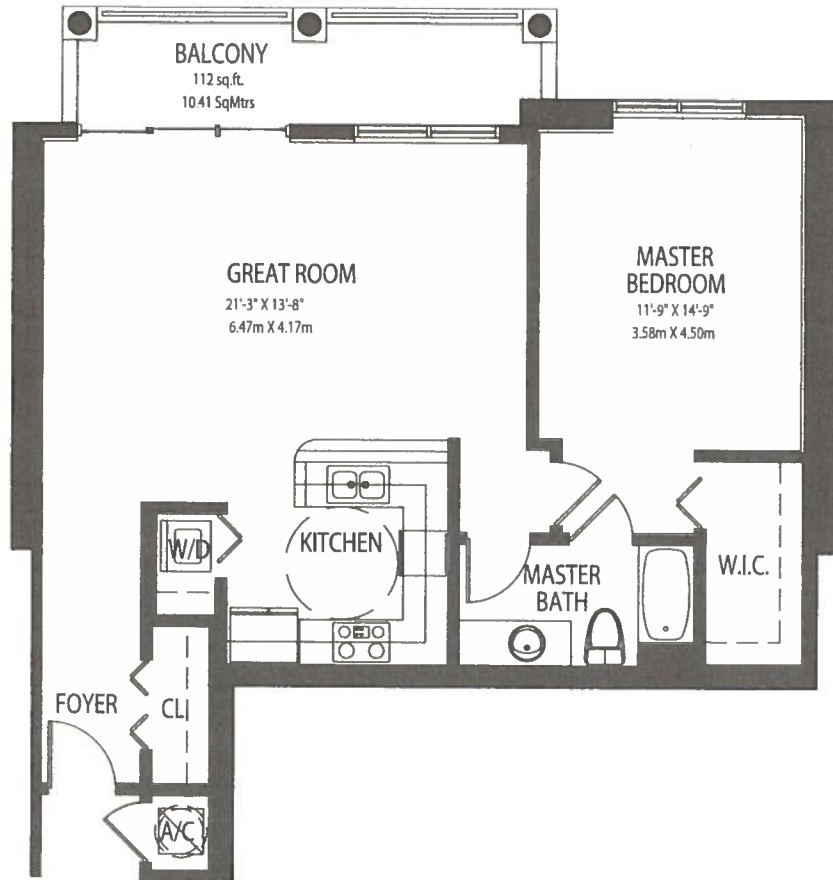
Plans, materials and specifications are subject to architectural, structural and other revisions as they are deemed advisable by the developer, builder or architect, or as they may be required by law. Oral representations cannot be relied upon as correctly stating representations of the developer. For correct representations, reference should be made to the documents required by Section 718.503, Florida Statutes, to be furnished by a developer to a buyer or lessee. All renderings are artist's conception.

# VUE

RESIDENCES & BEACH CLUB

UNIT *D*

Area A/C	910 sq.ft.	(85 m <sup>2</sup> )
Area Terrace	112 sq.ft.	(10 m <sup>2</sup> )
<b>Total Living Area</b>	<b>1,022 sq.ft.</b>	<b>(95 m<sup>2</sup>)</b>



Plans, materials and specifications are subject to architectural, structural and other revisions as they are deemed advisable by the developer, builder or architect, or as they may be required by law. Oral representations cannot be relied upon as correctly stating representations of the developer. For correct representations, reference should be made to the documents required by Section 718.503, Florida Statutes, to be furnished by a developer to a buyer or lessee. All renderings are artist's conception.